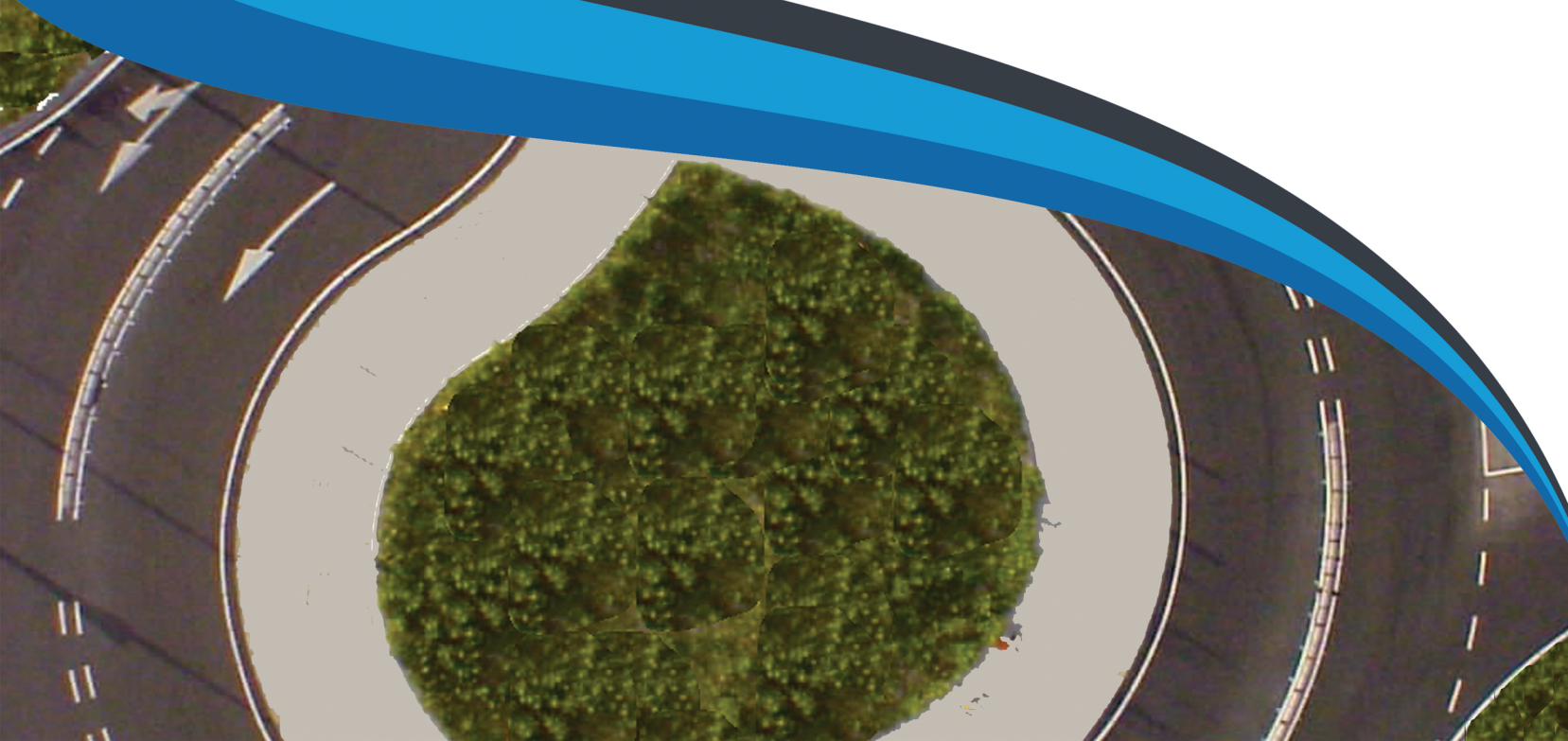




TMS ENGINEERS, INC.
Statement of Qualifications





COMPANY BROCHURE

TMS Engineers, Inc. is a specialized transportation and traffic engineering consulting firm representing clients that include governmental agencies, civil engineering firms, planning consulting firms, attorneys, private development interests, and architectural firms. Our experience with public and private clients allows us to meet the needs of our clients by providing functional, cost-effective solutions to the unique problems of a project.

Transportation Management Services was established in 2005, with headquarters located in suburban areas of Akron and Cleveland, Ohio. In 2006, the company was incorporated under the laws of the State of Ohio and became TMS Engineers, Inc. Michael W. Schweickart, president of the firm, has over 30 years combined experience in traffic engineering, transportation planning and design, and roadway design. He also has specialized in traffic signal design, timing, optimization, systems analysis and construction management.

TMS Engineers, Inc. is able to provide specialized technical services unlike any other firm. We maintains a close association with qualified architectural and engineering consultants to provide assistance and additional expertise as projects require.

TMS Engineers is pre-qualified by the Ohio Department of Transportation to provide Safety Studies, Interchange Justification and Modification Studies, Traffic Signal Design and Traffic Signal System Design services.

CONSULTING SERVICES

TRAFFIC ENGINEERING

- Traffic Impact Studies
- Traffic Engineering Assistance for Local Agencies
- Conceptual Highway and Intersection Analysis and Design
- Striping and Signing Plans
- Traffic Control Device Inventories
- Traffic Counting
- Pedestrian and Bikeway Facility Design
- Traffic Accident and Safety Studies
- Traffic Calming Studies & Designs
- Interchange Justification and Modification Studies
- Maintenance of Traffic Plans

TRANSPORTATION PLANNING

- Traffic Modeling
- Site Access and Circulation Studies
- Corridor & Area Planning Studies



TRAFFIC SIGNAL DESIGN, OPTIMIZATION and MANAGEMENT

- Traffic Signal Design Plans
- Traffic Signal System Design
- Traffic Signal Modifications
- Traffic Signal Emergency Vehicle Preemption Systems
- Traffic Signal Railroad Preemption Systems
- Traffic Signal Bus Priority Systems
- Interconnect Systems
- Traffic Signal Construction Management
- Systems Analysis (ODOT 633)
- Simulation, Optimization and Signal Timing Studies
- Traffic Signal System Monitoring and Management

TMS Engineers' staff is trained in the requirements of their professional activities. The staff is fully trained in all the requirements outlined in the Manual of Uniform Traffic Control Devices for Streets and Highways, the Ohio Department of Transportation's State Highway Access Management Manual, and in the American Association of State Highway and Transportation Official's (AASHTO) Design Guidelines.

TMS Engineers, Inc. is committed to improving its technical ability and efficiency through the use of state-of-the-art computer hardware and software, and documentation of analysis and design procedures.



RESUMES



MICHAEL W. SCHWEICKART, P.E., PTOE

PRESIDENT

PROFESSIONAL CREDENTIALS:

Registered Professional EngineerOhio Reg. No. E-56982
Pennsylvania Reg. No. PE076066
Kentucky Reg. No. PE28768
Indiana Reg. No. PE11300424
Michigan Reg. No. 6201063581

Institute of Transportation Engineers.....PTOE, 1999
ODOT Traffic Academy Traffic Signal Design
Traffic Signal System Design
Railroad Preempted Traffic Signal Design
Safety Studies
Interchange Justification Studies

AFFILIATIONS:

National Society of Professional Engineers
American Society of Civil Engineers
Institute of Transportation Engineers
ITS Mid-America

EDUCATION:

University of Akron B.S. Civil Engineering, 1986

POST GRADUATE:

Northwestern UniversityTraffic Engineering Seminar
Geometric Design Seminar
New York Polytechnic UniversityHighway Capacity Seminar
I.T.E..... Strategies to Alleviate Traffic Congestion
Signal Timing Fundamentals
NCHRP Report 500 Seminar
(Reducing Collisions on Horizontal Curves)
Ohio State University.....Ohio Transportation Engineering Conference
Government Road Liabilities (RTAP)
Traffic Engineering (RTAP)
Traffic Signal (RTAP)
Federal Highway Administration..... Rural ITS Toolbox (NHI)

PROFESSIONAL EXPERIENCE:

2006	TMS Engineers, Inc., President
2005 - 2006	Transportation Management Services, Owner
1996 - 2005	Traff-Pro Consultants, Inc., Vice President of Engineering
1991 - 1996	Traff-Pro Consultants, Inc., Chief Design Engineer
1978 - 1991	Path Master, Inc., Traffic Engineer
1973 - 1978	City of Middletown, Ohio, Transportation Analyst
1969 - 1973	City of Kettering, Ohio, Traffic Technician



ANDREW PIERSON, P.E., PTOE

TRAFFIC ENGINEER

PROFESSIONAL CREDENTIALS: Registered Professional EngineerOhio Reg. No. E-66690
Institute of Transportation Engineers.....PTOE, 2006

AFFILIATION: Institute of Transportation Engineers.....Lake Erie Chapter
Treasurer.....2007-2008
Vice President.....2009-2010
President.....2011

EDUCATION: University of Alaska B.S. Civil Engineering, 1996

PROFESSIONAL EXPERIENCE:

2013-	TMS Engineers, Inc., Traffic Engineer
2009 - 2013	GPD Group, Traffic Engineer
2002 - 2009	URS Corporation. Traffic Engineer
2000 - 2002	Parsons Brinkerhoff, Traffic Engineer
1998 - 2000	DLZ Consultants, Traffic Engineer
1995 - 1998	Traff-Pro Consultants, Engineer in Training



ANDREW B. COMER, P.E.

TRAFFIC ENGINEER

PROFESSIONAL CREDENTIALS:

Registered Professional Engineer....Ohio Reg. No. E-70215

AFFILIATION:

Institute of Transportation Engineers

EDUCATION:

University of Toledo B.S. Civil Engineering, 1999

POSTGRADUATE:

Northwestern University Highway Capacity
Workshop, 2013

PROFESSIONAL EXPERIENCE:

2006-	TMS Engineers, Inc., Traffic Engineer
2004 - 2006	Northeast Ohio Area Wide Coordinating Agency (NOACA), Traffic Engineer
1999 - 2004	Traff-Pro Consulting, Inc., Traffic Engineer



GERALD A. TOTH, JR.

TRANSPORTATION DESIGN SPECIALIST

AFFILIATES: Institute of Transportation Engineers

EDUCATION: Lakeland Community College Advanced AutoCAD, 1992
Electronic Technical Institute..... A.S. Electronic Technology, 1986

POST GRADUATE: I.T.E Reducing Collisions Involving Horizontal Curves Seminar
Signal Timing Fundamentals Seminar
Ohio State University Ohio Transportation Engineers Conference
.. Path Master, Inc..... Theory, Operation and Implementation of Video Detection, LED's and UPS Seminar
Workshops.....Understanding Client Needs
National Traffic Signal Report Card
Adding to your Traffic Engineering Toolkit

PROFESSIONAL EXPERIENCE:

2007-	TMS Engineers, Inc., Transportation Design Specialist
2005 - 2006	HNTB, Inc., Traffic Signal Designer
1997 – 2005	Traff-Pro Consultants, Inc., Traffic Signal Designer
1991 – 1997	Traff-Pro Consultants, Inc., AutoCAD Technician
1989 – 1991	Mid-American Engineering, Electronics Technician



PROJECTS:

TRAFFIC IMPACT STUDIES

PROJECT: Proposed Hebrew Academy of Cleveland –
Cleveland Heights, Ohio

CONTACT: Mr. Ronald Kluchin
Ronald Kluchin Architects, Inc.
23215 Commerce Park, Suite 316
Beachwood, Ohio 44122



DESCRIPTION: TMS Engineers, Inc. was retained by the Hebrew Academy of Cleveland to prepare a Traffic Impact Study for a proposed private school development along the west side of Warrensville Center Road at the site of the former Oakwood Country Club in the City of Cleveland Heights, Cuyahoga County, Ohio.

The proposed private school development is expected to consist of pre-kindergarten through grade 12. The campus is expected to serve approximately 600 total students.

Based upon the results of the analyses in the TIS, it was shown that the recommended improvements to the surrounding area roadway network and the proposed traffic control at the new school access locations can accommodate the site generated traffic from the proposed school without significantly impacting the area roadway network.

PROJECT: Proposed Swenson's Restaurant – University Heights, Ohio

CONTACT: Mr. Robert Cash
CARDNO
9800 Southern Pine Boulevard, Suite 1
Charlotte, NC 28273



DESCRIPTION: This traffic impact study was prepared at the request of CARDNO for a proposed Swenson's Drive-In restaurant. The project site is located in the City of University Heights, Cuyahoga County, Ohio along the south side of Cedar Road between South Green Road to the west and Fenway Drive to the east.

The proposed restaurant is expected to consist of a 1,716 square foot building and the surrounding parking lot to serve patrons. The restaurant does not have a drive-through window or indoor seating. Patrons are served at their vehicle.

Based upon the results of the analyses in the TIS, it was shown that the site generated traffic from the proposed development could be accommodated without adversely impacting the adjacent area roadway network.

PROJECT: Proposed K-12 School – Beaver Local School District

CONTACT: Mr. Dallis Dawson
Dallis Dawson & Associates
16165 St. Clair Avenue
P.O. Box 2568
East Liverpool, Ohio 43920



DESCRIPTION: Dallis Dawson and Associates in coordination with TMS Engineers, Inc. were hired by the Beaver Local School District to prepare a Traffic Impact Study for the proposed redevelopment of the Beaver Local Middle School site in Columbiana County, Ohio. The redevelopment of the site included the removal of an existing middle school facility which was replaced with a new K-12 school.

The new K-12 school consolidated 5 existing schools in the district at one site. The Beaver Local School District was comprised of three elementary schools, one middle school, and one high school.

Based upon the results of the analyses in the TIS, it was shown that the recommended improvements to the surrounding area roadway network and the proposed traffic control at the new school access locations can accommodate the site generated traffic from the relocated and consolidated schools without significantly impacting the area roadway network.



PROJECTS:

TRAFFIC STUDIES

PROJECT: Clifton Boulevard Road Diet / Multi-Purpose Lane
Lakewood, Ohio

CONTACT: Mr. Bryce Sylvester, AICP
City of Lakewood
12650 Detroit Avenue
Lakewood, Ohio 44107



DESCRIPTION: TMS Engineers, Inc. performed data collection and traffic analysis for a proposed road diet and creation of a multi-purpose lane along Clifton Boulevard in the City of Lakewood, Ohio. The project area is located between Lake Road to the west and West Clifton Road to the east.

The report was structured for the following purposes:

1. To adequately assess the traffic impacts associated with the proposed road diet and to identify the level of study area access and traffic
2. To provide a comprehensive analysis which evaluates and documents the traffic impacts and any necessary improvements, where warranted
3. To provide a technically sound basis to identify mitigation requirements to traffic impacts created by the road diet and creation of the multi-purpose lane.

PROJECT: West High Avenue (State Route 39) – New Philadelphia, Ohio

CONTACT: Mr. Harry D. Matter, P.E., P.S.
Civil Design Associates, Inc.
1760 Brightwood, S.E.
New Philadelphia, Ohio 44663



DESCRIPTION:

A Traffic Engineering Study (TES) was prepared at the request of Civil Design Associates, Inc. for West High Avenue (State Route 39). The study area is located along West High Avenue from Bluebell Drive to the west and 11TH Street to the east in the City of New Philadelphia, Tuscarawas County, Ohio. The TES also included the analysis of a proposed Menards home improvement store at the north end of Bluebell Drive.

The analyses determined that a road diet and the addition of bicycle lanes to the section of Clifton Boulevard under study was a feasible project that could be accommodated by the study area roadway network.

The TES resulted in a series of recommendations to the study area roadways to better accommodate the movement of vehicular and pedestrian traffic in the study area.

PROJECT: Purpose & Need Study – Mayfield Village

CONTACT: Mayor Bruce G. Rinker
Mayfield Village
6622 Wilson Mills Road
Mayfield Village, Ohio 44143



DESCRIPTION:

The purpose and need study was prepared at the request of Mayfield Village in order to evaluate potential signal upgrades to the two major corridors within the Village. Due to numerous concerns including excessive energy consumption, environmental emissions, maintenance requirement and compliance with current design codes, the project reviewed existing conditions and made various recommendations to improve the overall efficiency of the signal systems within the Village.

The report recommended the installation of ADA compliant curb ramps at seven (7) intersections along with the installation of LED lenses at 6 signalized intersections. The LED lenses will allow uninterrupted power supplied to be provided to each of these intersections. The report also recommended the installation of an advanced central traffic control system in order to bring all existing signal controllers under a single operational system.



**PROJECTS –
TRAFFIC ENGINEERING SERVICES**

PROJECT: Traffic Count Program –
NOACA (Northeast Ohio Areawide Coordinating Agency)

CONTACT: Mr. Dave Kuebler
NOACA
1299 Superior Road
Cleveland, Ohio 44114



DESCRIPTION:

This project involved the collection of 24-hour traffic data at over a thousand locations from 2012 – 2015 throughout Lorain, Medina, Cuyahoga, Lake and Geauga Counties. The collection of the classification and speed traffic data was collected using Jamar Apollyon traffic counters in some very difficult weather and geometric conditions.

PROJECT: Re-Timing Analysis – Mayfield Road, Mayfield Heights

CONTACT: Mr. Joseph Fornaro
City of Mayfield Heights
6154 Mayfield Road
Mayfield Heights, Ohio 44124



DESCRIPTION:

This signal re-timing project was initiated by the City of Mayfield Heights and included the re-timing of 17 signalized intersections on Mayfield Road (US 322) between Iroquois Avenue and Gates Mill Towers. The objectives of the study were to calculate and implement up-to-date clearance timings at the intersections along with optimizing the timings and offsets of each study intersection in order to reduce congestion and increase travel speeds along the corridor.

Based on the results of travel runs before and after the signal re-timing, there was shown to be a 22% reduction in travel time and a 48% reduction in stop delays. This resulted in an increase in travel speeds of 28% and is expected to save 1.6 million dollars a year in time and gas savings. The signal retiming project was able to achieve a benefit to cost ratio of 88 to 1.

PROJECT: Corridor Analysis – Ridge Road, Brooklyn, Ohio

CONTACT: Mr. Dave Palmer, P.E.
Path Master, Inc.
1960 Midway Drive
Twinsburg, Ohio 44087



DESCRIPTION:

This corridor study was prepared for to adequately assess the average travel time through seven (7) signalized intersections on Ridge Road between the I-480 EB Ramps to Memphis Road. This project involved no actual construction of additional lanes or the installation of new signal equipment but instead involved the revision to the signal timings and offsets along the corridor to reduce the delay experienced along the corridor.

The results of the travel time studies showed the timing improvements resulted in a 25% reduction on travel time for this 1.5 mile corridor in addition to increasing the travel times by 6.1 miles per hour. The reduction in stops and delays was shown to reduce emissions and saved motorists 124,392 gallons of gasoline each year. The Ridge Road Corridor is an example of the immense benefits provided by the optimization of traffic timings along a signal corridor.

PROJECT: Corridor Analysis – CUY-77-82-2.82-11.59
Broadview Heights, Ohio

CONTACT: Mr. Dave Palmer, P.E.
Path Master, Inc.
1960 Midway Drive
Twinsburg, Ohio 44087



DESCRIPTION:

This speed and delay study was prepared for the signalization project on SR 82 in Broadview Heights, Ohio. The signalization project involved the construction of 3 additional traffic signals at the I-77 ramp intersections and the interconnection of all 6 signals within the corridor.

The optimization of the traffic signal timings and offsets resulted in a 7% reduction in travel time along the corridor even with three additional signals on the corridor. The reduction in delay was determined to equate to a savings of 19,710 gallons of gasoline per year.



**PROJECTS –
TRAFFIC SIGNAL DESIGN, OPTIMIZATION and MANAGEMENT**

PROJECT: City Wide Traffic Signal Upgrade – Westlake, Ohio

CONTACT: Mr. Robert P. Kelly, P.E.
City of Westlake
27700 Hilliard Boulevard
Westlake, Ohio 44145



DESCRIPTION:

The project consists of the modernization and coordination of traffic signals at 41 locations along the corridors of Center Ridge Road, Columbia Road, Detroit Road Clague Road, Center Ridge Road, Hilliard Blvd. and other various locations. The project included upgrading signal hardware including vehicular signal heads, mast arm signal supports, pedestrian signals, controllers, detectors, and emergency vehicle detection. The project included traffic responsive computer system with fiber optic communication cable.

The project coordinated the timing of traffic signals in seven sub areas to provide efficient traffic flow, reduce congestion and add improvement in air quality for the region. The computerized signal system measures traffic volumes, congestion and speeds and makes automatic commands to implement signal timing.



PROJECT: City Wide Traffic Signal Project – Brunswick, Ohio

CONTACT: Mr. Matt Jones, P.E.
Chagrin Valley Engineering, Ltd.
22999 Forbes Road, Suite B
Cleveland, Ohio 44146



DESCRIPTION:

The project consists of the modernization and coordination of traffic signals at 25 locations along the corridors of Center Road (SR 303), Pearl Road (US 42) and other various locations. The project included upgrading signal hardware including vehicular signal heads, mast arm signal supports, pedestrian signals, controllers, detectors, and emergency vehicle detection. The project included traffic responsive computer system with fiber optic communication cable.

The project coordinated the timing of traffic signals in four sub areas to provide efficient traffic flow, reduce congestion and add improvement in air quality for the region. The computerized signal system measures traffic volumes, congestion and speeds and makes automatic commands to implement signal timing.

PROJECT: City Wide Traffic Signal Upgrade Project – Phase 1
Dover, Ohio

CONTACT: Mr. Dave Douglas
City of Dover
110 East Third Street
Dover, Ohio 44622



DESCRIPTION:

The project consists of the modernization and coordination of traffic signals at 14 locations along the corridors of Wooster Ave., Iron Ave. and other various locations. The project included upgrading signal hardware including vehicular signal heads, mast arm signal supports, pedestrian signals, controllers, detectors, and emergency vehicle detection. The project included traffic responsive computer system with fiber optic communication cable.

The project coordinated the timing of traffic signals in one sub area to provide efficient traffic flow, reduce congestion and add improvement in air quality for the region. The computerized signal system measures traffic volumes, congestion and speeds and makes automatic commands to implement signal timing.

PROJECT: Traffic Signal Design – Avon Chester Road Improvements
Avon, Ohio

CONTACT: Mr. Mike Farmer
Service Director
Chagrin Valley Engineering, Ltd.
22999 Forbes Road, Suite B
Cleveland, Ohio 44146



DESCRIPTION:

The project consists of the re-design of the Chester Road and SR 83 East Intersection and the Chester Road and Wal-Mart Drive intersection traffic signals. The project included upgrading signal hardware including vehicular signal heads, mast arm signal supports, pedestrian signals, controllers, detectors, and emergency vehicle detection. The project also included fiber optic communication cable through the project area for the use of a traffic responsive computer system in the near future.

The project coordinated the timing of the traffic signals along Chester Road to provide efficient traffic flow and reduce congestion. Traffic control measures were also included through the use of new pavement markings and signing, as necessary due to the roadway configuration being widened along Chester Road.



OHIO DEPARTMENT OF TRANSPORTATION

John R. Kasich, Governor

Jerry Wray, Director

February 20, 2018

1980 W. Broad Street, Columbus, OH 43223

614-466-7170

transportation.ohio.gov

Michael W. Schweickart
TMS Engineers, Inc.
2112 Case Parkway South #7
Twinsburg, OH 44087

Re: Prequalification Status

Dear Mr. Schweickart:

The Office of Consultant Services has reviewed your request for prequalification and approved your firm's technical prequalification to provide the following services:

INTERCHANGE JUSTIFICATION/ MODIFICATION STUDY

SAFETY STUDY

TRAFFIC SIGNAL DESIGN - Basic Traffic Signal Design
Traffic Signal System Design

Questions concerning your prequalification should be directed to Dan Krajcovic in the Office of Consultant Services at (614) 466-3742.

Your firm will be retained on our list of active prequalified consultants. This current prequalification will expire on February 28, 2020.

Respectfully,

A handwritten signature in black ink that reads "Mat Mauger".

Mat Mauger
Administrator
Office of Consultant Services

MM:DK

c: File

Excellence in Government

ODOT is an Equal Opportunity Employer and Provider of Services



Bureau of Workers' Compensation

30 W. Spring St.
Columbus, OH 43215

Certificate of Ohio Workers' Compensation

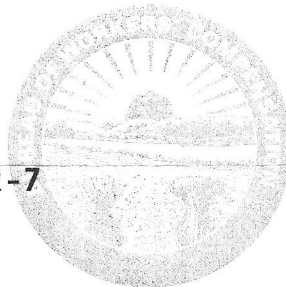
This certifies that the employer listed below participates in the Ohio State Insurance Fund as required by law. Therefore, the employer is entitled to the rights and benefits of the fund for the period specified. This certificate is only valid if premiums and assessments, including installments, are paid by the applicable due date. To verify coverage, visit www.bwc.ohio.gov, or call 1-800-644-6292.

This certificate must be conspicuously posted.

Policy number and employer
1465330-0

Period specified below
**07/01/2017 through
06/30/2018**

**TMS ENGINEERS INC
2112 CASE PKWY UNIT NUMBER-7
TWINSBURG, OH 44087-4301**

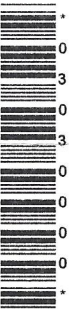


www.bwc.ohio.gov

Issued by:

Administrator/CEO

You can reproduce this certificate as needed.



Ohio Bureau of Workers' Compensation

Required Posting

Effective Oct. 13, 2004, Section 4123.54 of the Ohio Revised Code requires notice of rebuttable presumption. Rebuttable presumption means an employee may dispute or prove untrue the presumption (or belief) that alcohol or a controlled substance not prescribed by the employee's physician is the proximate cause (main reason) of the work-related injury.

The burden of proof is on the employee to prove the presence of alcohol or a controlled substance was not the proximate cause of the work-related injury. An employee who tests positive or refuses to submit to chemical testing may be disqualified for compensation and benefits under the Workers' Compensation Act.



Bureau of Workers' Compensation

You must post this language with the Certificate of Ohio Workers' Compensation



CERTIFICATE OF LIABILITY INSURANCE

DATE (MM/DD/YYYY)

8/23/2017

THIS CERTIFICATE IS ISSUED AS A MATTER OF INFORMATION ONLY AND CONFERS NO RIGHTS UPON THE CERTIFICATE HOLDER. THIS CERTIFICATE DOES NOT AFFIRMATIVELY OR NEGATIVELY AMEND, EXTEND OR ALTER THE COVERAGE AFFORDED BY THE POLICIES BELOW. THIS CERTIFICATE OF INSURANCE DOES NOT CONSTITUTE A CONTRACT BETWEEN THE ISSUING INSURER(S), AUTHORIZED REPRESENTATIVE OR PRODUCER, AND THE CERTIFICATE HOLDER.

IMPORTANT: If the certificate holder is an ADDITIONAL INSURED, the policy(ies) must be endorsed. If SUBROGATION IS WAIVED, subject to the terms and conditions of the policy, certain policies may require an endorsement. A statement on this certificate does not confer rights to the certificate holder in lieu of such endorsement(s).

PRODUCER DesignPro Insurance Group 5991 Chandler Court, Suite A Westerville OH 43082	CONTACT NAME: Tracey Heise PHONE (A/C. No. Ext): (614) 426-9043 FAX (A/C. No): (614) 794-4961 E-MAIL ADDRESS: tracey.designproins@wichert.com																				
	<table border="1"> <tr> <th colspan="2">INSURER(S) AFFORDING COVERAGE</th> <th>NAIC #</th> </tr> <tr> <td>INSURER A:</td> <td>Foremost Signature Ins Co</td> <td>41513</td> </tr> <tr> <td>INSURER B:</td> <td>Continental Casualty Company</td> <td></td> </tr> <tr> <td>INSURER C:</td> <td></td> <td></td> </tr> <tr> <td>INSURER D:</td> <td></td> <td></td> </tr> <tr> <td>INSURER E:</td> <td></td> <td></td> </tr> <tr> <td>INSURER F:</td> <td></td> <td></td> </tr> </table>	INSURER(S) AFFORDING COVERAGE		NAIC #	INSURER A:	Foremost Signature Ins Co	41513	INSURER B:	Continental Casualty Company		INSURER C:			INSURER D:			INSURER E:			INSURER F:	
INSURER(S) AFFORDING COVERAGE		NAIC #																			
INSURER A:	Foremost Signature Ins Co	41513																			
INSURER B:	Continental Casualty Company																				
INSURER C:																					
INSURER D:																					
INSURER E:																					
INSURER F:																					
INSURED TMS Engineers, Inc. 2112 Case Parkway South #7 Twinsburg OH 44087																					

COVERAGES

CERTIFICATE NUMBER: CL1782330555

REVISION NUMBER:

THIS IS TO CERTIFY THAT THE POLICIES OF INSURANCE LISTED BELOW HAVE BEEN ISSUED TO THE INSURED NAMED ABOVE FOR THE POLICY PERIOD INDICATED. NOTWITHSTANDING ANY REQUIREMENT, TERM OR CONDITION OF ANY CONTRACT OR OTHER DOCUMENT WITH RESPECT TO WHICH THIS CERTIFICATE MAY BE ISSUED OR MAY PERTAIN, THE INSURANCE AFFORDED BY THE POLICIES DESCRIBED HEREIN IS SUBJECT TO ALL THE TERMS, EXCLUSIONS AND CONDITIONS OF SUCH POLICIES. LIMITS SHOWN MAY HAVE BEEN REDUCED BY PAID CLAIMS.

INSR LTR	TYPE OF INSURANCE	ADDL INSD	SUBR WVD	POLICY NUMBER	POLICY EFF (MM/DD/YYYY)	POLICY EXP (MM/DD/YYYY)	LIMITS
A	<input checked="" type="checkbox"/> COMMERCIAL GENERAL LIABILITY <input type="checkbox"/> CLAIMS-MADE <input checked="" type="checkbox"/> OCCUR GEN'L AGGREGATE LIMIT APPLIES PER: <input checked="" type="checkbox"/> POLICY <input type="checkbox"/> PRO-JECT <input type="checkbox"/> LOC OTHER:			PAS001125139	8/24/2017	8/24/2018	EACH OCCURRENCE \$ 2,000,000 DAMAGE TO RENTED PREMISES (Ea occurrence) \$ 2,000,000 MED EXP (Any one person) \$ 10,000 PERSONAL & ADV INJURY \$ 2,000,000 GENERAL AGGREGATE \$ 4,000,000 PRODUCTS - COMP/OP AGG \$ 4,000,000
A	AUTOMOBILE LIABILITY <input type="checkbox"/> ANY AUTO ALL OWNED AUTOS <input checked="" type="checkbox"/> HIRED AUTOS <input type="checkbox"/> SCHEDULED AUTOS <input checked="" type="checkbox"/> NON-OWNED AUTOS			PAS001125139	8/24/2017	8/24/2018	COMBINED SINGLE LIMIT (Ea accident) \$ 1,000,000 BODILY INJURY (Per person) \$ BODILY INJURY (Per accident) \$ PROPERTY DAMAGE (Per accident) \$
A	<input checked="" type="checkbox"/> UMBRELLA LIAB <input checked="" type="checkbox"/> OCCUR <input type="checkbox"/> EXCESS LIAB <input type="checkbox"/> CLAIMS-MADE DED <input checked="" type="checkbox"/> RETENTION \$ 0			PAS001125139	8/24/2017	8/24/2018	EACH OCCURRENCE \$ 2,000,000 AGGREGATE \$ 2,000,000
A	WORKERS COMPENSATION EMPLOYERS' LIABILITY ANY PROPRIETOR/PARTNER/EXECUTIVE OFFICER/MEMBER EXCLUDED? (Mandatory in NH) If yes, describe under DESCRIPTION OF OPERATIONS below		N/A	PAS001125139	8/24/2017	8/24/2018	<input type="checkbox"/> PER STATUTE <input checked="" type="checkbox"/> OTHER E.L. EACH ACCIDENT \$ 1,000,000 E.L. DISEASE - EA EMPLOYEE \$ 1,000,000 E.L. DISEASE - POLICY LIMIT \$ 1,000,000
B	Professional Liability			MCH 276192355	8/24/2017	8/24/2018	Each Claim \$1,000,000 Aggregate \$1,000,000

DESCRIPTION OF OPERATIONS / LOCATIONS / VEHICLES (ACORD 101, Additional Remarks Schedule, may be attached if more space is required)

CERTIFICATE HOLDER**CANCELLATION**

For Proposal Purposes Only

SHOULD ANY OF THE ABOVE DESCRIBED POLICIES BE CANCELLED BEFORE THE EXPIRATION DATE THEREOF, NOTICE WILL BE DELIVERED IN ACCORDANCE WITH THE POLICY PROVISIONS.

AUTHORIZED REPRESENTATIVE

Brad Bush, CPCU/TRAC

© 1988-2014 ACORD CORPORATION. All rights reserved.

SIGNAL DESIGN PROJECTS – 2014 to Present

UNDER RESPONSIBLE CHARGE AND SUPERVISION
OF MICHAEL W. SCHWEICKART, P.E., PTOE

JOB #	CLIENT	COST OF PROJECT	FEE REMAINING
14-018	City of Dover	\$183,669.00	October 2 nd , 2015
14-020	Dallis Dawson & Associates	\$7,660.00	January 13 th , 2015
14-029	Bramhall Engineering & Surveying	\$9,500.00	April 3 rd , 2015
14-045	City of Ravenna	\$49,540.00	July 31 st , 2015
14-047	Poggemeyer Design Group	\$5,340.00	June 26 th , 2014
14-049	Stephen Hovanscek & Associates	\$19,000.00	July 2 nd , 2014
14-068	Humility of Mary Health Partners	\$21,000.00	January 8 th , 2015
14-083	TDA Architecture	\$9,840.00	January 13 th , 2015
14-090	TDA Architecture	\$6,700.00	July 1 st , 2014
14-101	City of Avon	\$7,500.00	August 1 st , 2014
14-131	Summit County Engineers	\$5,850.00	March 20 th , 2015
14-138	Cleveland Clinic	\$8,340.00	January 16 th , 2015
14-139	Bramhall Engineering & Surveying	\$7,500.00	March 2 nd , 2015
14-148	K.E. McCartney & Associates	\$27,197.00	January 6 th , 2016
14-152	City of Avon	\$14,670.00	\$14,670.00
14-155	City of Avon	\$10,230.00	February 26 th , 2015
14-156	City of Strongsville	\$418,602.00	In Progress
14-160	Scannell Properties	\$8,340.00	April 1 st , 2015
14-162	Kokosing Construction Company	\$8,340.00	February 23 rd , 2015
15-039	8 and 80 Holdings, LLC	\$8,340.00	May 27 th , 2015
15-048	Westlake Reed Leskosky	\$12,510.00	June 4 th , 2015
15-049	W.E. Quicksall & Associates	\$15,510.00	April 23 rd , 2015
15-060	Richard Jacobs Group	\$9,410.00	July 24 th , 2015
15-066	Boulder One, LLC	\$6,500.00	June 1 st , 2015
15-070	Sitetech, Inc.	\$9,410.00	August 4 th , 2015
15-074	City of Avon	\$7,660.00	August 20 th , 2015
15-082	Wellert Corporation	\$6,500.00	July 17 th , 2015
15-094	W.W. Quicksall & Associates	\$11,450.00	September 18 th , 2015
15-101	Chagrin Valley Engineering	\$10,430.00	November 11 th , 2015

SIGNAL DESIGN PROJECTS – 2014 to Present

UNDER RESPONSIBLE CHARGE AND SUPERVISION
OF MICHAEL W. SCHWEICKART, P.E., PTOE

JOB #	CLIENT	COST OF PROJECT	FEE REMAINING
15-102	Chagrin Valley Engineering	\$16,540.00	October 2 nd , 2015
15-103	GATSO USA, Inc.	\$6,900.00	September 3 rd , 2015
15-105	City of Green	\$8,580.00	November 11 th , 2015
15-116	City of Green	Hourly	October 2 nd , 2015
15-120	Neff & Associates, Inc.	\$19,350.00	December 2, 2015
15-141	Tusing Builders, Inc.	\$6,500.00	February 3 rd , 2016
15-145	Village of Burbank	\$9,100.00	December 21, 2015
16-031	Hatch Mott McDonald	\$11,286.00	September 6, 2016
16-056	Mayfield Village	\$7,370.00	May 25, 2016
16-062	Chagrin Valley Engineering	\$10,550.00	August 25, 2016
16-063	Chagrin Valley Engineering	\$7,660.00	August 25, 2016
16-067	City of Green	Hourly	June 16, 2016
16-068	BFA, Inc.	\$10,180.00	May 10, 2016
16-070	Mayfield Village	\$12,490.00	May 25, 2016
16-083	BSHM Architects	\$5,660.00	June 29, 2016
16-085	Chagrin Valley Engineering	\$10,320.00	November 17, 2016
16-093	Signal Service Company	Hourly	May 23, 2016
16-117	Cleveland Clinic	\$4,900.00	August 3, 2016
16-119	Deville Development	\$9,390.00	September 22, 2016
16-135	Franciscan University of Steubenville	\$16,210.00	October 6, 2016
16-141	City of Amherst	\$9,430.00	In Progress
16-153	Neff & Associates	\$7,390.00	December 13, 2016
16-157	City of Lakewood	\$11,200.00	December 2, 2016
16-163	Bramhall Engineering & Surveying	\$4,260.00	February 7, 2017
16-165	Larsen Architects	\$5,660.00	January 10, 2017
17-017	City of Avon	\$9,430.00	February 18, 2017
17-025	LSB Seven Hills, LLC	\$20,730.00	
17-028	Tusing Builders	\$16,210.00	April 25, 2017

SIGNAL DESIGN PROJECTS – 2014 to Present

UNDER RESPONSIBLE CHARGE AND SUPERVISION
OF MICHAEL W. SCHWEICKART, P.E., PTOE

JOB #	CLIENT	COST OF PROJECT	FEE REMAINING
17-029	City of Avon	\$16,220.00	July 3, 2017
17-035	Mayfield Village	\$4,900.00	April 4, 2017
17-036	Mackaey Engineering & Surveying	\$4,260.00	March 23, 2017
17-038	City of Dover	\$13,400.00	May 25, 2017
17-053	City of Dover	\$184,200.00	
17-062	City of New Philadelphia	\$48,000.00	
17-065	Mackaey Engineering & Surveying	\$13,800.00	
17-069	ARCO National Construction	\$13,570.00	July 13, 2017
17-079	City of Avon	\$4,600.00	
17-087	K.E. McCartney & Associates, Inc.	\$4,260.00	
17-088	City of Avon	\$14,660.00	
17-096	Diversified Engineering	\$13,570.00	

TRANSPORTATION ASSESSMENT STUDIES

UNDER RESPONSIBLE CHARGE AND SUPERVISION
OF MICHAEL W. SCHWEICKART, P.E., PTOE

JOB #	CLIENT	LOCATION OF WORK	DATE of WORK
05-001	Visconsi Companies, Ltd.	Strongsville Retail Center, Strongsville	April 25 th , 2005
05-002	Woodmont Group	Streetsboro Retail Center, Streetsboro	June 30 th , 2005
05-024	KS Associates, Inc.	Streetsboro Wal-Mart, Streetsboro	June 17 th , 2005
05-027	Neff & Associates	Streetsboro Dell Web, Streetsboro	June 30 th , 2005
05-028	Wellert Corporation	Proposed BP Development, Brunswick	July 6 th , 2005
05-033	CEI Engineering Assoc.	Proposed Best Buy, Avon	July 19 th , 2005
05-034	KS Associates, Inc.	Chestnut Commons, Elyria	July 26 th , 2005
05-037	Vocon Design, Inc.	Proposed Key Commons Expansion, Brooklyn	August 22 nd , 2005
05-038	Neff & Associates	Proposed Bank Development, Streetsboro	August 11 th , 2005
05-039	K.E. McCartney & Associates	Proposed Multi-Use Development, Avon	September 27 th , 2005
05-043	KS Associates, Inc.	Proposed Wal-Mart, Bedford	August 26 th , 2005
05-044	Franchise Operations	Proposed Burger King Expansion, Avon	August 22 nd , 2005
05-054	Village of Walton Hills	Alexander Road & Dunham Road, Walton Hills	November 3 rd , 2005
05-055	KS Associates, Inc.	Proposed Wal-Mart, Lorain	October 28 th , 2005
05-058	Visconsi Companies, Ltd.	Proposed Walgreen's, Austintown	November 11 th , 2005
05-059	City of Brunswick	Grafton Road & Hadcock Road, Brunswick	November 15 th , 2005
05-061	Wellert Corporation	Proposed Arby's, Painesville	December 8 th , 2005
05-062	Hudson City School District	Ellsworth Hills Elementary School, Hudson	November 18 th , 2005
05-065	Parkside Church	Proposed Church Expansion, Bainbridge	January 18 th , 2006
06-006	Richard Jacobs Group	Proposed Amherst Commons, Amherst	February 21 st , 2006
06-008	Mombo Management Co	Proposed Sharon Corporate Park, Sharon Twsp.	February 8 th , 2006
06-025	Chagrin Valley Engineering	Fairmont Boulevard & Brainard Boulevard, Pepper Pike	May 3 rd , 2006
06-028	Mortell & Associates	Proposed Residential Development, Painesville	March 28 th , 2006
06-032	KS Associates, Inc.	Proposed Wal-Mart, Bedford	April 7 th , 2006
06-037	Midtown Cleveland	Cleveland Innerbelt, Cleveland	May 31 st , 2006
06-038	Star Architectural Group	Proposed Pat Catan's, Medina	July 5 th , 2006
06-042	Atwell Hicks	Proposed Wal-Mart, Vermilion	May 1 st , 2006
06-054	Ravenna City School District	Ravenna High School, Ravenna	June 19 th , 2006
06-056	Wellert Corporation	Proposed Get n Go, Canton	June 20 th , 2006

TRANSPORTATION ASSESSMENT STUDIES

UNDER RESPONSIBLE CHARGE AND SUPERVISION
OF MICHAEL W. SCHWEICKART, P.E., PTOE

JOB #	CLIENT	LOCATION OF WORK	DATE of WORK
06-058	Osborne Capital Group	Proposed Retail Development, Ontario	September 28 th , 2006
06-069	Bramhall Engineering	Proposed Development, Perkins Township	July 7 th , 2006
06-080	City of South Euclid	South Green Road, South Euclid	January 29 th , 2007
06-085	Karam Companies	Proposed Retail Development, Medina	September 28 th , 2006
06-087	James A. York Architects	Proposed Century Plaza, Amherst	January 2 nd , 2008
06-088	Village of Sheffield	Colorado Avenue & Abbe Road, Sheffield	October 11 th , 2006
06-090	Panzica Companies	Proposed Retail Development, Newberry	January 19 th , 2007
06-091	KS Associates, Inc.	Proposed Wal-Mart, Liberty	October 11 th , 2006
06-093	Bramhall Engineering	Proposed Medical Development, Perkins Twsp.	September 28 th , 2006
06-096	City of Brunswick	Proposed South Industrial Parkway, Brunswick	November 2 nd , 2006
06-097	Stephen Hovanscek & Associates	SOM Center Rd & Hickory Hill Dr, Mayfield	November 2 nd , 2006
06-104	Nestle Food Services	Proposed Nestle Facility, Solon	November 2 nd , 2006
06-105	Stephen Hovanscek & Associates	Raleigh Drive, Mayfield Village	January 2 nd , 2008
06-109	Lewanski Development	Renaissance Park, Strongsville	November 21 st , 2006
06-116	KS Associates	Proposed Wal-Mart, Brooklyn	November 27 th , 2006
06-118	Ironwood Development	Proposed Commons, Chillicothe	February 2 nd , 2007
06-122	K.E. McCartney & Associates	The Shoppes & Sterkel Park, Mansfield	January 2 nd , 2008
06-125	City of Green	Arlington Road & Jarvis Road, Green	March 2 nd , 2007
06-130	Civil Design Associates	K-12 Combined School Campus, Martins Ferry	January 22 nd , 2007
06-132	Elm Street Properties, LLC	Mapleview Sub-Division, Painesville	January 29 th , 2007
07-006	KS Associates, Inc.	Proposed Wal-Mart, Malvern	February 1 st , 2007
07-008	Chagrin Valley Engineering	Lander Circle, Pepper Pike	May 19 th , 2008
07-009	Richard Jacobs Group	Proposed Mixed-Use Development, Brecksville	February 26 th , 2007
07-011	Lesko Architecture, Inc.	Greenview Upper Elementary School, South Euclid	January 31 st , 2007
07-012	H. David Howe Architects	Proposed Drug Mart, North Olmsted	January 29 th , 2007
07-023	Trans European Securities	Proposed Quarries Project, Cleveland	May 31 st , 2007
07-025	Windfall Park Center, Ltd.	Proposed Retail Development, Medina	March 20 th , 2007
07-029	Forest City Land Group	Proposed Development, Eaton Township	May 7 th , 2007

TRANSPORTATION ASSESSMENT STUDIES

UNDER RESPONSIBLE CHARGE AND SUPERVISION
OF MICHAEL W. SCHWEICKART, P.E., PTOE

JOB #	CLIENT	LOCATION OF WORK	DATE of WORK
07-034	Reimer Investment Group	Proposed Parcel Development, Wadsworth	May 29 th , 2007
07-037	Geis Companies	Proposed Commerce Center, Glenwillow	April 25 th , 2007
07-039	Neff & Associates	Proposed Sub-Division, Richmond Heights	April 23 rd , 2007
07-042	City of Avon	Proposed Recreation Complex, Avon	June 7 th , 2007
07-054	City of Dover	Boulevard Street, Dover	July 20 th , 2007
07-055	Westlake Reed Leskosky	Proposed Cleveland Clinic Development, Twinsburg	August 16 th , 2007
07-072	KS Associates, Inc.	Proposed Wal-Mart, Canfield	November 16 th , 2007
07-078	Richard Jacobs Group	Proposed Medical Facilities, Avon	August 28 th , 2007
07-081	Miller & Roberts, Inc.	Proposed Sweetbriar Winery, Vermilion	September 26 th , 2007
07-082	Corbett Farms, LLC	Proposed Mixed-Use Development, Twinsburg	January 2 nd , 2008
07-085	South Range Local School District	K-12 Combination School, Beaver Township	October 8 th , 2007
07-087	Pride One Omni Real Estate	Proposed Sharon Commercial Park, Medina	September 24 th , 2007
07-093	Portage Management, LLC	Proposed Medina Surgery Center, Medina	October 2 nd , 2007
07-094	Village of Moreland Hills	SOM Center Rd & Chagrin Blvd, Moreland Hills	October 17 th , 2007
07-099	City of Hudson	Bard Drive & Nantucket Drive, Hudson	November 13 th , 2007
07-100	Osborne Capital Group	Wilson Mills Road, Mayfield Village	October 19 th , 2007
07-101	Visconsi Companies	Proposed Retail Development, Strongsville	October 15 th , 2007
07-102	Osborne Capital Group	Proposed Retail Development, Highland Heights	October 22 nd , 2007
07-106	Consolidated Investors Group	Proposed Development, Amherst	November 28 th , 2007
07-109	Zwick & Associates	Proposed Development, North Olmsted	July 20 th , 2007
07-112	Ferfolia Limited Partners	Proposed Access Driveway, Aurora	December 24 th , 2007
07-113	Orange Village	Miles Road, Orange Village	January 22 nd , 2008
07-115	Olmsted Falls City Schools	Intermediate School, Olmsted Falls	December 17 th , 2007
07-118	Wegman Hessler & Vanderburg	W. 215 th Street Vacation, Cleveland	November 30 th , 2007
07-120	Pointe Heisley, LLC	Proposed Commercial Re-Zoning, Mentor	December 13 th , 2007
07-125	Moody Nolan, Inc.	University Hospital, Concord Township	January 22 nd , 2008
07-133	City of Westlake	Westlake Apartment Complex, Westlake	January 24 th , 2008
07-136	Waterway Gas & Wash	Proposed Development, University Heights	December 31 st , 2007
07-141	Brookfield Local Schools	K-12 Combination, Brookfield Township	February 4 th , 2008

TRANSPORTATION ASSESSMENT STUDIES

UNDER RESPONSIBLE CHARGE AND SUPERVISION
OF MICHAEL W. SCHWEICKART, P.E., PTOE

JOB #	CLIENT	LOCATION OF WORK	DATE of WORK
08-005	Karam Companies	Bath Crest Estates, Cuyahoga Falls	January 24 th , 2008
08-011	Zaremba Group, LLC	Proposed CVS, Lorain	January 31 st , 2008
08-021	City of Green	Proposed Rite Aid, Green	March 3 rd , 2008
08-024	Ohio Realty Advisors	Proposed Cleveland Quarries, Cleveland	April 9 th , 2008
08-026	Zaremba Group, LLC	Proposed CVS, Cuyahoga Falls	March 11 th , 2008
08-027	Manorbrook Homes	Proposed Residential Development, Chagrin Falls	February 26 th , 2008
08-029	Herman Gibans Fodor, Inc.	McGregor Development Project, East Cleveland	April 16 th , 2008
08-034	Zaremba Group, LLC	Proposed CVS, Stow	March 24 th , 2008
08-036	First Interstate Properties	Proposed Industrial Park, Cleveland	April 25 th , 2008
08-042	Visconsi Companies	Proposed Walgreen's, Parma	April 29 th , 2008
08-046	KS Associates, Inc.	Proposed Wal-Mart, Eastlake	May 8 th , 2008
08-050	Neff & Associates	Proposed Carmax, Middleburg Heights	May 23 rd , 2008
08-052	Elyria City Schools	Elyria High School, Elyria	May 29 th , 2008
08-054	Neff & Associates	Meadow View Sub-Division, Streetsboro	June 12 th , 2008
08-056	City of Avon	Proposed Retail Development, Avon	July 15 th , 2008
08-060	KS Associates, Inc.	Proposed Wal-Mart, Warren	June 4 th , 2008
08-064	Richard Jacobs Group	Proposed Commercial Development, Avon	October 23 rd , 2008
08-067	Giant Eagle, Inc.	Proposed Giant Eagle Expansion, Streetsboro	July 31 st , 2008
08-068	Pride One Omni Real Estate	Trails at Montville, Medina	June 25 th , 2008
08-073	Goodman Real Estate	Proposed Shopping Center, Rockport	July 3 rd , 2008
08-078	Hess & Assoc. Engineering	Proposed Development, Newberry	August 1 st , 2008
08-080	K.E. McCartney & Associates	Proposed Sunrise Hospitality, Springfield	August 14 th , 2008
08-082	Bierne Enterprises	Proposed Retail Development, Wadsworth	August 11 th , 2008
08-084	Atwell Hicks	Proposed Aldi's, Madison Township	August 7 th , 2008
08-098	Zaremba Group, LLC	Proposed CVS, Twinsburg	September 29 th , 2008
08-100	Rittman Exempted Village School	Junior / Senior High School, Village of Rittman	October 6, 2008
08-103	Darden Company	Proposed Entertainment Complex, Chagrin Falls	October 7 th , 2008
08-106	Richard Jacobs Group	Spectrum Parkway West, Beachwood	November 3 rd , 2008

TRANSPORTATION ASSESSMENT STUDIES

UNDER RESPONSIBLE CHARGE AND SUPERVISION
OF MICHAEL W. SCHWEICKART, P.E., PTOE

JOB #	CLIENT	LOCATION OF WORK	DATE of WORK
08-114	LANDesign, LLC	Proposed Soccer Complex, Twinsburg	December 3 rd , 2008
08-119	City of Green	Myersville Road, Green	December 19 th , 2008
09-009	Wellert Corporation	Proposed BP, Avon	February 6 th , 2009
09-011	Giant Eagle, Inc.	Proposed Giant Eagle Expansion, Brooklyn	February 20 th , 2009
09-017	Kimble Companies	Proposed Commercial Development, Twinsburg	March 9 th , 2009
09-027	Howells and Baird, Inc.	Franciscan University, Steubenville	April 17 th , 2009
09-031	Chagrin Valley Engineering	Dunham Elementary School, Maple Heights	April 22 nd , 2009
09-038	Chagrin Valley Engineering	Milkovich Middle School, Maple Heights	May 28 th , 2009
09-046	Amherst Public Library	Proposed Library Expansion, Amherst	June 5 th , 2009
09-049	Stephen Hovanscek & Assoc.	Wilson mills Road & Bishop Road, Highland Heights	June 19 th , 2009
09-053	Columbiana County Engineers	SR 170 & Columbia, Columbiana County	July 21 st , 2009
09-054	K.E. McCartney & Associates	Proposed Development, Washington Township	July 31 st , 2009
09-055	R. E. Warner & Associates	Proposed CMHA Campus, Cleveland	July 7 th , 2009
09-058	Compco Land Company	Diamond Legacy Development, Boardman	December 29 th , 2009
09-065	Chagrin Valley Engineering	North Carpenter, Brunswick	August 27 th , 2009
09-067	Ballparks of America	Proposed Baseball Complex, Milan Township	August 21 st , 2009
09-072	Discount Drug Mart	Proposed Drug Mart, Medina	September 11 th , 2009
09-079	Parkside Church	Proposed Church Expansion, Bainbridge Twsp.	November 9 th , 2009
09-082	Valore Builders, Inc.	Proposed Hampton Place, North Ridgeville	October 12 th , 2009
09-092	Anthony Allega, Inc.	Proposed Commercial Development, Chesterland	November 25 th , 2009
09-103	Ballparks of America	Proposed Baseball Complex, Milan Township	August 21 st , 2009
10-012	Geis Companies	Proposed Patriot Energy Plant, Hudson	March 1 st , 2010
10-016	Zaremba Group, LLC	Proposed CVS, Wadsworth	March 4 th , 2010
10-018	Fuller Design Group, Inc.	Proposed Apartment Complex, Kent	April 14 th , 2010
10-019	Corna Architect	Spring Valley Retirement Center, Spring Valley	April 26 th , 2010
10-021	Adena Corporation	VA Hospital, Parma	April 26 th , 2010
10-023	Geis Companies	Hemingway & Richmond, Warrensville Heights	January 4 th , 2011
10-034	KS Associates, Inc.	Proposed Wal-Mart Expansion, Brooklyn	May 5 th , 2011
10-036	Sikora Law, LLC	Proposed E. 119 th St Condos, Cleveland	April 20 th , 2009

TRANSPORTATION ASSESSMENT STUDIES

UNDER RESPONSIBLE CHARGE AND SUPERVISION
OF MICHAEL W. SCHWEICKART, P.E., PTOE

JOB #	CLIENT	LOCATION OF WORK	DATE of WORK
10-042	Atwell, LLC	Proposed Key Bank, Painesville	May 27 th , 2010
10-047	Zaremba Group, LLC	Proposed CVS, North Canton	May 18 th , 2010
10-048	Bellevue City Schools	Bellevue Elementary and Middle Schools, Bellevue	July 23, 2010
10-050	Westlake City Schools	Dover Elementary School, Westlake	June 23, 2010
10-059	GBC Design, Inc.	Hartville Hardware, Hartville	August 3 rd , 2010
10-065	Star, Inc.	Proposed Mickey Mart, Vermilion	July 14 th , 2010
10-067	Krock Esser Engineering	Stonewater Residential Development, Twinsburg	July 2 nd , 2010
10-079	JBF Health Services, Ltd.	Proposed Nursing Facility, Green	July 22 nd , 2010
10-086	Springfield Local School District	Springfield 7-12 School, Lakemore Township	September 22, 2010
10-089	Aldi Inc.	Proposed Aldi's, Macedonia	September 30 th , 2010
10-090	City of Hudson	West Prospect Street, Hudson	December 13 th , 2010
10-096	City of Hudson	Hudson Street & Aurora Street, Hudson	December 10 th , 2010
10-098	Seton Catholic School	Seton Catholic Elementary School, Hudson	November 10, 2010
10-101	Fanning Howey Architects	Coshocton Elementary School, Coshocton	November 24 th , 2010
10-110	Westlake City Schools	Westlake High School, Westlake	November 2 nd , 2010
10-113	Clark & Post Architects	Amherst Pre K-4 School, Amherst	January 3 rd , 2011
10-114	Clark & Post Architects	Amherst High School, Amherst	February 3 rd , 2011
10-117	Lorain City Schools	Proposed High School, Lorain	January 21 st , 2011
10-118	HRM Enterprises	Proposed Hartville Hardware, Hartville	January 6 th , 2011
10-121	First Interstate Properties	Proposed Avon Commons, Avon	June 16 th , 2011
10-124	City of Avon	Chester Road & Colorado Avenue, Avon	June 24 th , 2011
10-125	City of Avon	Jaycox Rd & Riegelsberger Road, Avon	February 25 th , 2011
11-009	City of Avon	City Wide Study, Avon	August 1 st , 2011
11-012	City of Streetsboro	Frost Road, Streetsboro	April 4 th , 2011
11-013	City of Avon	SR 83 & Mills Road	March 3 rd , 2011
11-014	City of North Ridgeville	SR 83 & Mills Road	March 3 rd , 2011
11-015	Shelby City Schools	Proposed High School, Shelby	April 22 nd , 2011
11-018	Giant Eagle, Inc.	Proposed Giant Eagle, Highland Heights	July 25 th , 2011

TRANSPORTATION ASSESSMENT STUDIES

UNDER RESPONSIBLE CHARGE AND SUPERVISION
OF MICHAEL W. SCHWEICKART, P.E., PTOE

JOB #	CLIENT	LOCATION OF WORK	DATE of WORK
11-026	City of Brecksville	Brecksville Road & Wallings Road, Brecksville	May 3 rd , 2011
11-029	South Range Local Schools	Proposed Sports Complex, South Range	May 3 rd , 2011
11-034	Canal Road Partners, LLC	Proposed Asphalt / Concrete Plant, Kingsville	April 8 th , 2011
11-035	Parkside Church	Proposed Church Expansion, Bainbridge Twsp.	August 24 th , 2011
11-036	Streetsboro Equity, LLC	Proposed Access, Streetsboro	May 5 th , 2011
11-041	Huntington National Bank	Proposed Bank Development, North Ridgeville	May 13 th , 2011
11-044	City of Green	Massillon Road & Boettler Road, Green	July 6 th , 2011
11-047	Lorain City Schools	Proposed High School, Lorain	June 7 th , 2011
11-048	Bramhall Engineering & Surveying	Proposed LCCC Ridge Campus, North Ridgeville	June 10 th , 2011
11-052	Star, Inc.	Proposed Pat O'Brien Chevy Dealership, Vermillion	August 9 th , 2011
11-058	Colmont Portage, LLC	Proposed Streetsboro Commons, Streetsboro	July 6 th , 2011
11-067	David Sabol Architect, LLC	Proposed Brunswick Auto Mart, Brunswick	June 29 th , 2011
11-069	Hudson City School District	Proposed High School Stadium, Hudson	September 23 rd , 2011
11-071	Ohio City, Inc	NOACA TLCI Project – West Side Market District, Cleveland	August 1, 2011
11-090	City of Dover	Schneider's Crossing Road, Dover	January 18 th , 2012
11-098	Buckingham Companies	Proposed Improvements – Chester Avenue, Cleveland	October 7 th , 2011
11-103	Willard City Schools	Proposed K-12 School, Willard	November 17 th , 2011
11-105	Giant Eagle, Inc.	Proposed Get n Go, Fairlawn	November 1 st , 2011
11-116	Floyd Browne Group	NOACA TLCI Project - W.65th Street, Cleveland	January 17 th , 2012
11-117	Floyd Browne Group	NOACA TLCI Project - E.131st Street, Cleveland	January 11 th , 2012
11-121	City of Green	Raber Road & Mayfair Road, Green	January 5 th , 2012
11-126	City Architecture	NOACA TLCI Project – E. 140th Street, Cleveland	April 10, 2013
11-127	Peter J. Smith Company	NOACA TLCI Project – Euclid Avenue, Euclid	April 10, 2013
12-009	Lorain County Metro Park	Proposed Wellness Center	January 18 th , 2012
12-021	MS Consultants, Inc.	Proposed Oberlin Commercial Center	March 7 th , 2012
12-022	Edgebrook, LLC	Proposed Edgebrook Subdivision	March 12 th , 2012
12-024	Osborne Capital Group	Proposed Pepper Pike Restaurant	March 20 th , 2012
12-029	OverDrive, Inc.	Proposed Office Facility	April 18 th , 2012
12-031	CSL Consulting, LLC	Proposed Assisted Living Facility	March 20 th , 2012

TRANSPORTATION ASSESSMENT STUDIES

UNDER RESPONSIBLE CHARGE AND SUPERVISION
OF MICHAEL W. SCHWEICKART, P.E., PTOE

JOB #	CLIENT	LOCATION OF WORK	DATE of WORK
12-054	Campus Crest Development	Proposed KSU Campus Crest Development	June 1 st , 2012
12-056	Autumn Creek Partners	Proposed The Reserve of Autumn Creek Development	May 16 th , 2012
12-061	BEK Developers, LLC	Proposed Multi-Retail Development	June 18 th , 2012
12-062	St. Elizabeth Boardman Hospital	Proposed Hospital Expansion	July 19 th , 2012
12-071	Discount Drug Mart	Proposed Discount Drug Mart	July 2 nd , 2012
12-075	A & Z Management	Proposed Retail Development	June 21 st , 2012
12-092	Zaremba Group, LLC	Proposed CVS Development	September 20 th , 2012
12-100	Dallis Dawson & Associates	Proposed K-12 School	December 28 th , 2012
12-104	GBT Realty Corporation	Proposed Dollar General Development	November 14 th , 2012
12-111	Curran Architecture	Proposed Retail Development	November 15 th , 2012
13-015	Atwell, LLC	Proposed Out Parcel	February 2 nd , 2013
13-019	Visconsi Companies, Ltd.	Proposed Walgreen's	February 18 th , 2013
13-025	K.E. McCartney & Associates	Proposed Lorain Road Access	April 24 th , 2013
13-039	Zaremba Group, LLC	Proposed CVS Development	March 22 nd , 2013
13-041	Stantec	Oberlin College Boiler Plant Project	April 22 nd , 2013
13-042	Richard L. Bowen & Associates	Proposed Speedway Development	April 9 th , 2013
13-047	Richard Jacobs Group	Avon Crossing Access Change	May 17 th , 2013
13-051	Poggemeyer Design Group, Inc.	Proposed Commercial Development, Wood County	May 2 nd , 2013
13-054	Pilot Travel Centers, LLC	Proposed Pilot Travel Center, North Lima	May 16 th , 2013
13-057	Cuyahoga County Public Library	Proposed Orange Branch Library	April 26 th , 2013
13-058	Avon Local School District	Proposed Middle School, Avon	May 10 th , 2013
13-061	Acquisition Advisors, LLC	Proposed Medical Building, Copley	May 31 st , 2013
13-073	Clover Construction	Proposed Senior Living Facility, Parma	June 7 th , 2013
13-075	Ray Fogg Building Methods	Proposed Office Development, Brecksville	June 27 th , 2013
13-077	Donald G. Bohing & Associates	Proposed Residential Subdivision, Hudson	July 3 rd , 2013
13-078	Wellert Corporation	Proposed Marathon Development, Lake County	July 8 th , 2013
13-097	The Meritage Group, L.P.	Proposed Residential Development, North Ridgeville	July 24 th , 2013
13-112	VSCW Architects	Proposed Middle School, Avon	September 18 th , 2013

TRANSPORTATION ASSESSMENT STUDIES

UNDER RESPONSIBLE CHARGE AND SUPERVISION
OF MICHAEL W. SCHWEICKART, P.E., PTOE

JOB #	CLIENT	LOCATION OF WORK	DATE of WORK
13-113	VSCW Architects	Proposed K-3 Elementary School, Avon	September 18 th , 2013
13-128	Cleveland Clinic	Proposed Cancer Center, Cleveland	December 18 th , 2013
13-138	The Fountains of Solon, LLC	Proposed Multi-Family Development, Solon	December 18 th , 2013
13-143	First Interstate Properties	Avon Commons, Avon	December 9 th , 2013
13-146	Wellington Exempted Village Schools	Proposed 4-8 School, Wellington	December 20 th , 2013
13-152	GBC Design, Inc.	Proposed Access Analysis, Macedonia	February 4 th , 2014
13-158	Riverstone	Proposed GE Access, Erie, PA	December 30 th , 2013
13-162	City of Avon	Proposed City Pool, Avon	February 5 th , 2014
14-015	Scannell Properties	Proposed Development, Twinsburg	March 6 th , 2014
14-019	Waterway Gas & Wash	Proposed Waterway Gas & Wash, University Heights	March 10 th , 2014
14-025	Geis Companies	Proposed Volkswagen Dealership, Streetsboro	March 24 th , 2014
14-033	GBC Design, Inc.	Proposed Access Analysis, Warren	April 14 th , 2014
14-041	Conrad's Tire Service	Proposed Tire Store, Amherst	April 11 th , 2014
14-043	Premier Development Partners	Proposed Aurhaus Fulfillment Center, Boston Heights	April 24 th , 2014
14-050	K.E. McCartney & Associates	Proposed Sub-Division, Columbia Station	May 12 th , 2014
14-056	Geis Companies	Proposed Medina Road Office, Medina	May 8 th , 2014
14-060	K.E. McCartney & Associates	Proposed Sub-Division, Lorain County	May 12 th , 2014
14-063	Star, Inc.	Proposed Pat O'Brien Chevrolet, Vermilion	June 9 th , 2014
14-069	City of Mayfield Heights	Proposed Atrium Nursing Center, Mayfield Heights	May 27 th , 2014
14-074	R.E. Warner & Associates	Proposed Livingston Villa, Westlake	June 13 th , 2014
14-076	GLSD Architects, LLC	Proposed Tarkett Office Building, Solon	June 4 th , 2014
14-079	One UC Partners, LLC	Proposed 1 University Circle	June 26 th , 2014
14-080	Cleveland Clinic	Proposed S. Podiatry Parking Facility	January 15 th , 2015
14-081	Cleveland Clinic	Proposed CC + CWRU Campus	September 19 th , 2014
14-089	Petros Homes	Proposed Retail Development	July 15 th , 2015
14-106	Tusing Builders	Proposed Commercial Development	August 29 th , 2014
14-133	Ziska Architecture	St. Joseph Church	November 10 th , 2014
14-134	Kidzenia Learning Center	Proposed Daycare Facility	November 10 th , 2014
14-135	MHN Partners, LLC	Proposed Market Xpress	November 12 th , 2014

TRANSPORTATION ASSESSMENT STUDIES

UNDER RESPONSIBLE CHARGE AND SUPERVISION
OF MICHAEL W. SCHWEICKART, P.E., PTOE

JOB #	CLIENT	LOCATION OF WORK	DATE of WORK
14-140	Wellert Corporation	Proposed Circle K	December 8 th , 2014
14-141	Franciscan University of Steubenville	University Town Center	December 18 th , 2014
14-142	The Woods at Silver Creek	Proposed Commercial Development	December 22 nd , 2014
14-143	Mackay Engineering	Proposed Road	January 13 th , 2015
14-145	Cawrse & Associates	Proposed Retail & Access Road	January 30 th , 2015
14-151	Richard Jacobs Group	Chester Road	January 29 th , 2015
14-161	Discount Drug Mart	Proposed Medina County DDM 86	February 5 th , 2015
15-013	Giant Eagle, Inc.	Proposed GetGo	March 2 nd , 2015
15-021	Discount Drug Mart	Nagel Road Mixed Use Development	April 6 th , 2015
15-024	Mayfield Village	Proposed Community Room	March 20 th , 2015
15-027	Civil Design Associates	Proposed Planned Unit Development	March 25 th , 2015
15-030	Krock Esser Engineering	Proposed BBQ Restaurant	April 4 th , 2015
15-033	Parallel Partners, LLC	Proposed Ambassador Site	April 1 st , 2015
15-035	M & G Architects	Steubenville Civic Plaza	May 1 st , 2015
15-038	Geis Companies	Proposed Industrial Building	March 18 th , 2015
15-045	Atwell, LLC	Proposed Aldi's	April 3 rd , 2015
15-046	Lenity Architecture	Proposed Alzheimer's Care Center	May 7 th , 2015
15-047	Kent State University – Tuscarawas	Proposed Roadway Connection to E. High St.	August 14 th , 2015
15-051	DQRG, Inc.	Relocated Dairy Queen	July 17 th , 2015
15-057	Giant Eagle, Inc.	Proposed GetGo	April 20 th , 2015
15-058	Bouhechlem Petroleum, LLC	Proposed Silby Mart	May 4 th , 2015
15-067	DS Architecture	Proposed Dunkin Donuts	May 4 th , 2015
15-069	River View Local School District	Proposed School Expansion	July 22 nd , 2015
15-072	JND Properties, LLC	Proposed Starbuck's	June 18 th , 2015
15-077	Millridge Development, LLC	Proposed Millridge Subdivision	July 24 th , 2015
15-080	Discount Drug Mart	Proposed Broadview Road Development	July 27 th , 2015
15-087	Harsax Management	Proposed Georgetwon Apartments	August 5 th , 2015
15-095	Geis Construction	Revised Project Melt	August 27 th , 2015

TRANSPORTATION ASSESSMENT STUDIES

UNDER RESPONSIBLE CHARGE AND SUPERVISION
OF MICHAEL W. SCHWEICKART, P.E., PTOE

JOB #	CLIENT	LOCATION OF WORK	DATE of WORK
15-106	Pine Organge, LLC	Proposed Jacob's Multi-Use Development	October 2 nd , 2015
15-118	City of Hudson	New Salt Storage & School Bus Garage	December 21 st , 2015
15-119	Deville Development	Proposed Venue at Belden	October 19 th , 2015
15-122	Geis Companies	Proposed Office and R & D Development	December 22 nd , 2015
15-130	Bucyrus Lodgings, Inc.	Proposed Hotel	January 22 nd , 2016
15-148	Wellert Corporation	Proposed Circle K	January 15 th , 2016
15-154	Mota Design Group	Village at Town Center Development	February 22, 2016
15-155	Mota Design Group	Proposed Country Club Redevelopment	April 5, 2016
15-159	BFA, Inc.	Proposed Wal-Mart	February 1 st , 2016
15-162	RDL Architects, Inc.	Proposed Sisters of Notre Dame Assisted Living	April 5, 2016
15-164	JEA Senior Living	Proposed Alzheimer's Care Center	February 4 th , 2016
15-166	Hebrew Academy of Cleveland	Proposed Academy	January 28 th , 2016
15-169	City of Dover	Proposed Development	May 1, 2016
16-014	Oakwood Hospitality, LLC	Proposed Hotel	February 15, 2016
16-016	Ryan Homes	Fraden Holdings	February 8 th , 2016
16-024	Valley of the Eagles, LLC	Proposed Multi-Use Development	March 10, 2016
16-027	KS Kane Leasing, Ltd.	Proposed Gas Station	April 12, 2016
16-028	DA Bentley Construction	Proposed Taco Bell	March 2, 2016
16-049	Altenheim Senior Living	Proposed Expansion	April 15, 2016
16-052	Osborne Capital Group	Proposed Retail Center	April 22, 2016
16-059	LRC Realty	Proposed Retail Project	May 22, 2016
16-078	Atwell, LLC	Proposed Multi-Site Project	August 1, 2016
16-082	Burkhardt Engineering	Proposed Residences	June 15, 2016
16-087	Visconsi Companies	Proposed Retail Project	September 8, 2016
16-090	Parma Car Wash	Proposed Car Wash	July 23, 2016
16-106	Arco National Construction Co.	Proposed Office Building	August 3, 2016
16-114	Richard Jacobs Group	General Development Plan	September 13, 2016
16-122	Tusing Builders	Access Management Plan	September 16, 2016
16-124	Wellert Corporation	Proposed Circle K	September 6, 2016

TRANSPORTATION ASSESSMENT STUDIES

UNDER RESPONSIBLE CHARGE AND SUPERVISION
OF MICHAEL W. SCHWEICKART, P.E., PTOE

JOB #	CLIENT	LOCATION OF WORK	DATE of WORK
16-126	Anchor Retail Solutions	Proposed Multi-Tenant Development	September 16, 2016
16-133	Pulte Group	Proposed Retail Development	October 21, 2016
16-140	Ryan Homes	Proposed Fairway Pine Property	October 28, 2016
16-156	Benchmark Group	Proposed Retail Development	November 29, 2016
16-161	City of Mayfield Heights	Closing of Parking Drive	November 17, 2016
16-166	Landsong Engineering	Proposed Residential Development	December 2, 2016
16-172	Bayside Investment Group	Proposed 55 Acre Site	December 6, 2016
16-173	Blue Falls Real Estate Co.	Proposed Car Wash	December 13, 2016
16-174	Retail Anchor Solutions	Proposed Restaurants	December 15, 2016
16-176	Wellert Corporation	Proposed Circle K	December 20, 2016
16-177	Progressive Real Estate	Proposed Alpha Drive	March 07, 2017
17-013	Wellert Corporation	Proposed Circle K	February 8, 2017
17-020	City of Mayfield Heights	Proposed Chick-Fil-A	March 3, 2017
17-022	Green Land Trust, Ltd.	Proposed Spring Hill Business Park	March 30, 2017
17-026	Chagrin Valley Islamic Center	Proposed Islamic Center	April 7, 2017
17-033	Dholu Hospitality, Inc.	Proposed Dholu Hotel	March 31, 2017
17-034	Beck Suppliers, Inc.	Proposed Beck Friendly Foods	April 7, 2017
17-043	Beachwood City Schools	Proposed Elementary School	May 11, 2017
17-045	Ryan Homes	Proposed Residential Development	May 23, 2017
17-052	Westlake City Schools	Proposed PK-4 Elementary School	June 5, 2017
17-056	Cardno	Proposed Swenson's Restaurant	June 5, 2017
17-057	Scannell Properties	Proposed Warehouse	June 9, 2017
17-058	Revere Local School District	Proposed High School	
17-059	Revere Local School District	Proposed Elementary School	
17-061	Sands Decker CPS, LLC	Proposed Dover City Schools	June 21, 2017
17-068	S.P. Brady, Inc.	Proposed Reserve at Beaver Creek	July 17, 2017
17-070	G.P. Zampelli Construction, Inc.	Proposed Liberty Ford	July 13, 2017
17-078	Discount Drug Mart, Inc.	Nagel Road & Middleton Drive	August 21, 2017
17-098	Isomer Group, Inc.	Proposed SR 45 Discount Drug Mart	

TRANSPORTATION ASSESSMENT STUDIES

UNDER RESPONSIBLE CHARGE AND SUPERVISION
OF MICHAEL W. SCHWEICKART, P.E., PTOE

JOB #	CLIENT	LOCATION OF WORK	DATE of WORK
17-099	Anchor Retail Solutions, LLC	Proposed Retail Development	August 28, 2017
17-103	Ryan Homes	Proposed Wald Property	



Location 1:
2112 Case Parkway
Suite 7
Twinsburg, OH 44087



Phone
330-686-6402
Fax
330-686-6417



CONTACT US:

 [facebook.com/tmsengineers](https://www.facebook.com/tmsengineers)
 <http://www.tmsengineers.com>
 mail@tmsengineers.com